

## Agencies Located in Penang that Can Help

### Police Department

- Penang(headquarters) 222 1522
- Jelutong 282 5922
- Balik Pulau 866 9222
- Pulau Tikus 228 0422
- Sungai Nibong 643 0222
- Ayer Itam 826 8522
- Timur Laut 229 2222
- Butterworth 332 2222
- Bukit Mertajam 538 2222

### Welfare Department

- KOMTAR 650 5258
- Daerah Timur Laut 226 4531
- Daerah Barat Daya 866 8442
- Bukit Mertajam 538 2584
- Butterworth 331 3455

### Hospital

#### Accident and Emergency Department

- Penang General Hospital 222 5333
- Hospital Seberang Jaya 382 7333
- Hospital Balik Pulau 866 9333
- Hospital Bukit Mertajam 538 3333
- Hospital Sungai Bakap 582 4333

### Other Organisations

- Children's Protection Society 829 4046
- Legal Aid Bureau Penang 229 0966

## Resources available from WCC

1. Educational package on Child Sexual Abuse (Be Smart, Be Safe). (2001)  
This includes:
  - A teacher's guidebook "Teaching Children to Be Safe"
  - A children's pictorial booklet "Saya dan Suara Kecil Saya"
  - A video tape on the personal safety program "OK Tak OK"
  - A user's guide to the personal safety program.
2. Working with Rape Survivors: A Handbook. (2002)
3. Staying Safe: A pamphlet on Child Sexual Abuse.
4. Nina and her Secret. (2007)

*For more information, contact*



PUSAT KESEDARAN WANITA  
WOMEN'S CENTRE FOR CHANGE  
(formerly Women's Crisis Centre)

24-D Jalan Jones  
10250 Pulau Pinang, Malaysia  
Tel: 04-228 0342  
Fax: 04-228 5784  
E-mail: [wcc@wccpenang.org](mailto:wcc@wccpenang.org)  
Website: [www.wccpenang.org](http://www.wccpenang.org)



PUSAT KESEDARAN WANITA  
WOMEN'S CENTRE FOR CHANGE

The Women's Centre for Change (WCC) publishes a series of pamphlets to equip you with more knowledge of your rights.



# Child Sexual Abuse

It can happen to  
anyone  
Even your own  
child!



WOMEN'S CENTRE FOR CHANGE (WCC)  
(formerly known as Women's Crisis Centre)

24-D Jalan Jones, 10250 Penang, Malaysia  
Tel: 04-228 0342 • Fax: 04-228 5784

E-mail: [wcc@wccpenang.org](mailto:wcc@wccpenang.org) • Website: [www.wccpenang.org](http://www.wccpenang.org)

## What is Child Sexual Abuse

Child sexual abuse is the exploitation of a child for the sexual gratification of an adult or a juvenile. If a child is subjected to sexual intercourse by a family member, it is called incest.

## What It Is Not

Child sexual abuse should not be confused with physical contact between an adult that are fond or playful expressions of love. Responsible adults limit their physical exchange with a child, respecting the child and at the same time maintaining a warm, healthy and affectionate relationship.

## Scope & Statistics

According to Welfare Department statistics, child sexual abuse made up 31.4% of the total number of child abuse cases reported in 2001. Approximately 93% of these child abuse victims were girls and 7% were boys.

Police statistics (2006) showed that 67% of incest victims were below 16 years of age and 49% of incest perpetrators were biological or step fathers.

Child sexual abuse happens in all ethnic and religious groups as well as socio-economic levels.

## Who Abuses

Anyone who is in the position of authority and has access to children can abuse them. In 90% of reported cases, the offender is someone known to the child e.g. parents, relatives, neighbours, friends etc.

## How Does The Abuse Occur ?

Child sexual abuse occurs in the following ways:

### Non-physical contact

- verbal stimulation
- obscene phone calls
- exhibitionism
- exploitation: e.g. prostitution/ pornography

### Physical contact

- fondling child's genitals
- making child fondle offender's genitals
- actual or attempted penetration of child's vagina, mouth or anus with object or with offender's fingers and/ or penis

### How can I tell if a child is abused?

Victims of sexual abuse can have the following signs and symptoms:

#### Physical

- Reddening/itching of genital or anus
- Pain or injury of genital/anus
- Pain in passing urine
- Vaginal/penile discharge
- Abdominal pains



#### Behavioural

- Clinging behaviour
- Withdrawal/thumb-sucking
- Bed-wetting inappropriate for age
- Truancy
- Poor school performance
- Running away
- Alcohol and drug abuse
- Suicide attempts
- Excessive masturbation
- Seductive behaviour
- Sexual knowledge and activities inappropriate for age

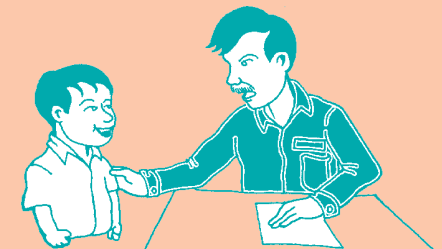
#### Psychological

Depression manifesting in somatic complaints such as:

- Headache
- Stomach ache
- Chest pain
- Fatigue
- Insomnia
- Fainting spells
- Tearful
- Hysteria
- Irrational fears
  - Appetite loss
  - Lack of concentration
  - Low self-esteem

## How Can I Help ?

- Stay calm and confident
- Believe the child
- Comfort and reassure the child
- Protect the child from further abuse
- Get medical attention for the child immediately
- Report to the Social Welfare Department/Police
- Say that it is not her fault
- Allow expression of feeling
- Listen but do not pressure for information
- Do not try to handle the abuser yourself
- Get the child to resume a normal life
- Continue support and reassurance



## How Can I Prevent Child Sexual Abuse

- Raising consciousness in the public on sexual assault
- Changing attitudes towards victims of sexual abuse
- Teaching children on social and moral values and respect for each other's body
- Eliminating sexism and sex role stereotyping
- Eliminating the shame and stigma associated with sexual assaults