

Contact Us



Discovering your child has been sexually abused is a traumatic experience.

You may feel confused, angry and helpless. It is not easy to process on what happened to your child and at the same time trying to support your child.

What can you do for your child?

- Understand that your child may have mixed feelings towards what had happened to him/her.
- Reaffirm your child that what had happened is not your child's fault.
- Provide space for your child to express his/her feelings and concerns.
- Be observant towards your child's behaviour and seek help if needed.

Women's Centre for Change (WCC)

📍 241, Jalan Burma,
10350 Penang.

☎ 04 228 0342

📞 011 3108 4001

✉ wcc@wccpenang.org

WCC Seberang/PPW

📍 13, Lorong Sutera 6, Taman Sutera,
13700 Seberang Jaya, Penang.

☎ 04 398 8340

📞 016 439 0698

✉ wccseberang@wccpenang.org

🌐 www.wccpenang.org

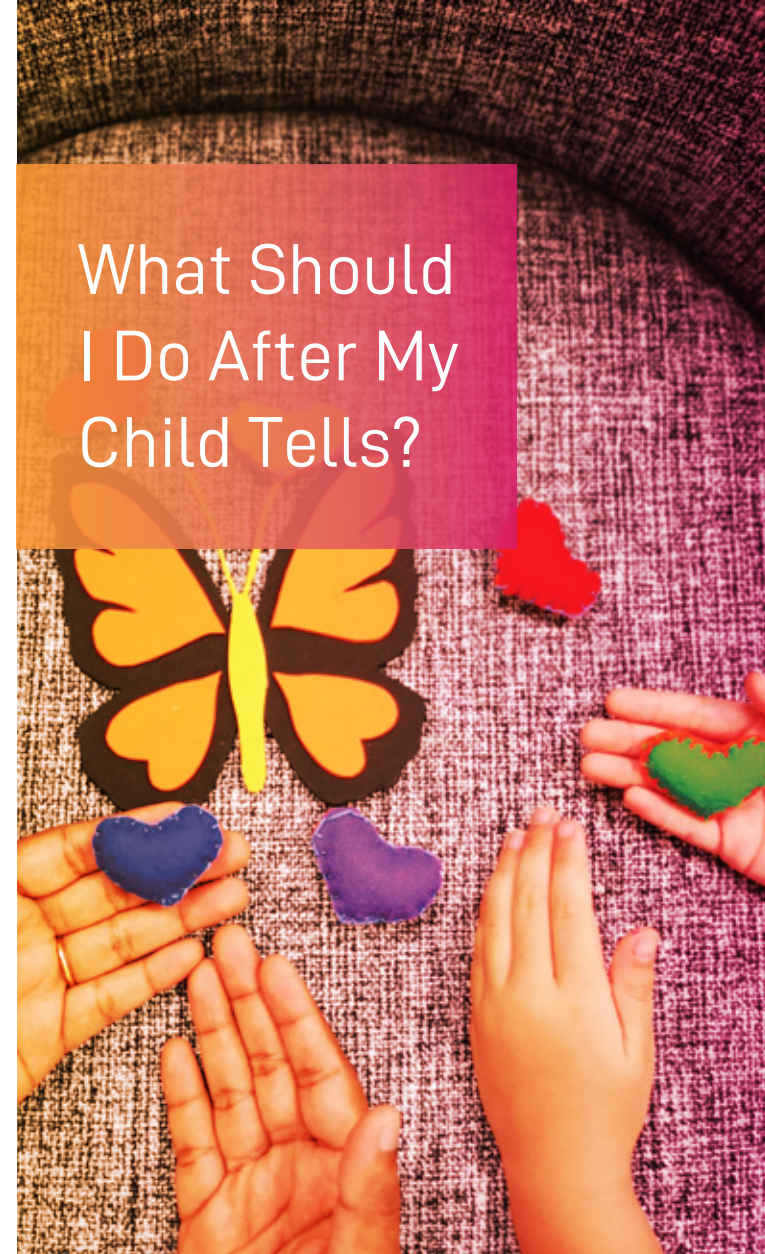
📘 WCC Penang

🐦 @WCCPenang

📷 @wccpenang

The Women's Centre for Change, Penang is a non profit, tax exempt organisation, dedicated to the elimination of violence against women and children, and the promotion of gender equality.

What Should I Do After My Child Tells?



Handling
Child Sexual
Abuse
Disclosure



Actions You Need to Take

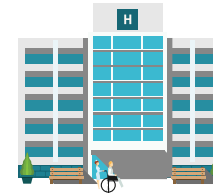
Police

You or your child is required to make a police report about the sexual abuse for the police to investigate your case.



Hospital

Your child will be examined in a special room (One Stop Crisis Centre - OSCC) of the Emergency Department of the government hospital. This examination will be used by the police in the investigation process.



WCC's Help

Our service is free and confidential

Emotional Support:

WCC provides free and confidential counselling for you and your child.



Play Therapy:

WCC may refer your child for play therapy to help your child heal & recover from his/her trauma.



Information on Criminal Justice System:

WCC will provide useful information on your child's rights and the procedures on his/her case.



Follow up with Agencies:

WCC will help to follow up your child's case with the relevant government agencies. For example, with the police on your case investigation or court on your trial date.



Court Support:

- WCC will arrange for a pre-trial briefing with the deputy public prosecutor.
- WCC staff will accompany you & your child to court if you or your child is required to testify.

